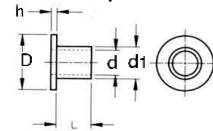
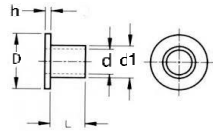


Shoulder Washers I/d-6mm - I/d-10mm Natural Nylon



d	d1	D	h	L
6.0	9.0	16.0	3.0	37.0
6.0	9.0	16.0	3.0	38.0
6.0	9.0	16.0	3.0	39.0
6.0	9.0	16.0	3.0	40.0
6.0	9.0	16.0	3.0	41.0
6.0	9.0	16.0	3.0	42.0
6.0	9.0	16.0	3.0	43.0
6.0	9.0	16.0	3.0	44.0
6.0	9.0	16.0	3.0	45.0
6.0	9.0	16.0	3.0	46.0
6.0	9.0	16.0	3.0	47.0
6.0	9.0	16.0	3.0	48.0
6.0	9.0	16.0	3.0	49.0
6.0	9.0	16.0	3.0	50.0
6.0	8.8	15.7	3.0	10.0
6.1	7.9	13.8	3.5	10.4
6.1	9.0	19.7	3.7	6.2
6.5	9.0	14.0	1.5	7.6
6.5	9.6	15.8	1.6	4.4
8.0	10.0	20.0	1.0	5.0
8.0	10.0	20.0	1.0	6.0
8.0	10.0	20.0	1.0	7.0
8.0	10.0	20.0	1.0	8.0
8.0	10.0	20.0	1.0	9.0
8.0	10.0	20.0	1.0	10.0
8.0	10.0	20.0	1.0	11.0
8.0	10.0	20.0	1.0	12.0
8.0	10.0	20.0	1.0	13.0
8.0	10.0	20.0	1.0	14.0
8.0	10.0	20.0	1.0	15.0
8.0	10.0	20.0	1.0	16.0
8.0	10.0	20.0	1.0	17.0
8.0	10.0	20.0	1.0	18.0
8.0	10.0	20.0	1.0	19.0
8.0	10.0	20.0	1.0	20.0
8.0	10.0	20.0	1.0	21.0
8.0	10.0	20.0	1.0	22.0
8.0	10.0	20.0	1.0	23.0
8.0	10.0	20.0	1.0	24.0
8.0	10.0	20.0	1.0	25.0
8.0	10.0	20.0	1.0	26.0
8.0	10.0	20.0	1.0	27.0
8.0	10.0	20.0	1.0	28.0
8.0	10.0	20.0	1.0	29.0
8.0	10.0	20.0	1.0	30.0
8.0	10.0	20.0	1.0	31.0
8.0	10.0	20.0	1.0	32.0
8.0	10.0	20.0	1.0	33.0
8.0	10.0	20.0	1.0	34.0
8.0	10.0	20.0	1.0	35.0
8.0	10.0	20.0	1.0	36.0
8.0	10.0	20.0	1.0	37.0
8.0	10.0	20.0	1.0	38.0
8.0	10.0	20.0	1.0	39.0
8.0	10.0	20.0	1.0	40.0
8.0	10.0	20.0	1.0	41.0
8.0	10.0	20.0	1.0	42.0
8.0	10.0	20.0	1.0	43.0

d	d1	D	h	L
8.0	10.0	20.0	1.0	44.0
8.0	10.0	20.0	1.0	46.0
8.0	10.0	20.0	1.0	47.0
8.0	10.0	20.0	1.0	48.0
8.0	10.0	20.0	1.0	49.0
8.0	10.0	20.0	1.0	50.0
8.0	14.0	20.0	2.6	11.8
8.1	11.0	20.0	2.0	5.0
8.1	11.0	20.0	2.0	6.0
8.1	11.0	20.0	2.0	7.0
8.1	11.0	20.0	2.0	8.0
8.1	11.0	20.0	2.0	9.0
8.1	11.0	20.0	2.0	10.0
8.1	11.0	20.0	2.0	11.0
8.1	11.0	20.0	2.0	12.0
8.1	11.0	20.0	2.0	13.0
8.1	11.0	20.0	2.0	14.0
8.1	11.0	20.0	2.0	15.0
8.1	11.0	20.0	2.0	16.0
8.1	11.0	20.0	2.0	17.0
8.1	11.0	20.0	2.0	18.0
8.1	11.0	20.0	2.0	19.0
8.1	11.0	20.0	2.0	20.0
8.1	11.0	20.0	2.0	21.0
8.1	11.0	20.0	2.0	22.0
8.1	11.0	20.0	2.0	23.0
8.1	11.0	20.0	2.0	24.0
8.1	11.0	20.0	2.0	25.0
8.1	11.0	20.0	2.0	26.0
8.1	11.0	20.0	2.0	27.0
8.1	11.0	20.0	2.0	28.0
8.1	11.0	20.0	2.0	29.0
8.1	11.0	20.0	2.0	30.0
8.1	11.0	20.0	2.0	31.0
8.1	11.0	20.0	2.0	32.0
8.1	11.0	20.0	2.0	33.0
8.1	11.0	20.0	2.0	34.0
8.1	11.0	20.0	2.0	35.0
8.1	11.0	20.0	2.0	36.0
8.1	11.0	20.0	2.0	37.0
8.1	11.0	20.0	2.0	38.0
8.1	11.0	20.0	2.0	39.0
8.1	11.0	20.0	2.0	40.0
8.1	11.0	20.0	2.0	41.0
8.1	11.0	20.0	2.0	42.0
8.1	11.0	20.0	2.0	43.0
8.1	11.0	20.0	2.0	44.0
8.1	11.0	20.0	2.0	45.0
8.1	11.0	20.0	2.0	46.0
8.1	11.0	20.0	2.0	47.0
8.1	11.0	20.0	2.0	48.0
8.1	11.0	20.0	2.0	49.0
8.1	11.0	20.0	2.0	50.0
8.1	11.0	20.0	3.0	5.0
8.1	11.0	20.0	3.0	6.0
8.1	11.0	20.0	3.0	7.0
8.1	11.0	20.0	3.0	8.0
8.1	11.0	20.0	3.0	9.0

d	d1	D	h	L
8.1	11.0	20.0	3.0	10.0
8.1	11.0	20.0	3.0	11.0
8.1	11.0	20.0	3.0	12.0
8.1	11.0	20.0	3.0	13.0
8.1	11.0	20.0	3.0	14.0
8.1	11.0	20.0	3.0	15.0
8.1	11.0	20.0	3.0	16.0
8.1	11.0	20.0	3.0	17.0
8.1	11.0	20.0	3.0	18.0
8.1	11.0	20.0	3.0	19.0
8.1	11.0	20.0	3.0	20.0
8.1	11.0	20.0	3.0	21.0
8.1	11.0	20.0	3.0	22.0
8.1	11.0	20.0	3.0	23.0
8.1	11.0	20.0	3.0	24.0
8.1	11.0	20.0	3.0	25.0
8.1	11.0	20.0	3.0	26.0
8.1	11.0	20.0	3.0	27.0
8.1	11.0	20.0	3.0	28.0
8.1	11.0	20.0	3.0	29.0
8.1	11.0	20.0	3.0	30.0
8.1	11.0	20.0	3.0	31.0
8.1	11.0	20.0	3.0	32.0
8.1	11.0	20.0	3.0	33.0
8.1	11.0	20.0	3.0	34.0
8.1	11.0	20.0	3.0	35.0
8.1	11.0	20.0	3.0	36.0
8.1	11.0	20.0	3.0	37.0
8.1	11.0	20.0	3.0	38.0
8.1	11.0	20.0	3.0	39.0
8.1	11.0	20.0	3.0	40.0
8.1	11.0	20.0	3.0	41.0
8.1	11.0	20.0	3.0	42.0
8.1	11.0	20.0	3.0	43.0
8.1	11.0	20.0	3.0	44.0
8.1	11.0	20.0	3.0	45.0
8.1	11.0	20.0	3.0	46.0
8.1	11.0	20.0	3.0	47.0
8.1	11.0	20.0	3.0	48.0
8.1	11.0	20.0	3.0	49.0
8.1	11.0	20.0	3.0	50.0
8.1	9.8	15.9	4.0	11.8
8.2	11.0	20.0	2.0	7.0
8.4	11.0	20.0	2.0	4.1
10.0	13.0	23.7	2.0	5.0
10.0	13.0	23.7	2.0	6.0
10.0	13.0	23.7	2.0	7.0
10.0	13.0	23.7	2.0	8.0
10.0	13.0	23.7	2.0	9.0
10.0	13.0	23.7	2.0	10.0
10.0	13.0	23.7	2.0	11.0
10.0	13.0	23.7	2.0	12.0
10.0	13.0	23.7	2.0	13.0
10.0	13.0	23.7	2.0	14.0
10.0	13.0	23.7	2.0	15.0
10.0	13.0	23.7	2.0	16.0
10.0	13.0	23.7	2.0	17.0
10.0	13.0	23.7	2.0	18.0

d	d1	D	h	L
10.0	13.0	23.7	2.0	19.0
10.0	13.0	23.7	2.0	20.0
10.0	13.0	23.7	2.0	21.0
10.0	13.0	23.7	2.0	22.0
10.0	13.0	23.7	2.0	23.0
10.0	13.0	23.7	2.0	24.0
10.0	13.0	23.7	2.0	25.0
10.0	13.0	23.7	2.0	26.0
10.0	13.0	23.7	2.0	27.0
10.0	13.0	23.7	2.0	28.0
10.0	13.0	23.7	2.0	29.0
10.0	13.0	23.7	2.0	30.0
10.0	13.0	23.7	2.0	31.0
10.0	13.0	23.7	2.0	32.0
10.0	13.0	23.7	2.0	33.0
10.0	13.0	23.7	2.0	34.0
10.0	13.0	23.7	2.0	35.0
10.0	13.0	23.7	2.0	36.0
10.0	13.0	23.7	2.0	37.0
10.0	13.0	23.7	2.0	38.0
10.0	13.0	23.7	2.0	39.0
10.0	13.0	23.7	2.0	40.0
10.0	13.0	23.7	2.0	41.0
10.0	13.0	23.7	2.0	42.0
10.0	13.0	23.7	2.0	43.0
10.0	13.0	23.7	2.0	44.0
10.0	13.0	23.7	2.0	45.0
10.0	13.0	23.7	2.0	46.0
10.0	13.0	23.7	2.0	47.0
10.0	13.0	23.7	2.0	48.0
10.0	13.0	23.7	2.0	49.0
10.0	13.0	23.7	2.0	50.0
10.0	13.0	23.7	3.0	5.0
10.0	13.0	23.7	3.0	6.0
10.0	13.0	23.7	3.0	7.0
10.0	13.0	23.7	3.0	8.0
10.0	13.0	23.7	3.0	9.0
10.0	13.0	23.7	3.0	10.0
10.0	13.0	23.7	3.0	11.0
10.0	13.0	23.7	3.0	12.0
10.0	13.0	23.7	3.0	13.0
10.0	13.0	23.7	3.0	14.0
10.0	13.0	23.7	3.0	15.0
10.0	13.0	23.7	3.0	16.0
10.0	13.0	23.7	3.0	17.0
10.0	13.0	23.7	3.0	18.0
10.0	13.0	23.7	3.0	19.0
10.0	13.0	23.7	3.0	20.0
10.0	13.0	23.7	3.0	21.0
10.0	13.0	23.7	3.0	22.0
10.0	13.0	23.7	3.0	23.0
10.0	13.0	23.7	3.0	24.0
10.0	13.0	23.7	3.0	25.0
10.0	13.0	23.7	3.0	26.0
10.0	13.0	23.7	3.0	27.0
10.0	13.0	23.7	3.0	28.0
10.0	13.0	23.7	3.0	29.0
10.0	13.0	23.7	3.0	30.0

Further Combinations With Regards To Sizes Are Available On Request